



Keep cold and contaminated air outside

Due to its broad range, the EASYAIR water-supplied or electric air curtain can be used in any sort of open entrance, such as in shops, supermarkets, builder's merchants, offices and hospitals.

The air curtain is suitable for an installation height of up to 4.10 metres and is available in widths from 1.0 to 3.0 metres.

The use of a three-row heat exchanger means that the EASYAIR air curtain is energy efficient. The water-supplied air curtain is supplied as standard for a low water temperature of 80/60°C. The conversion table may be used for other water temperatures.

By using a thermostatic 3-way valve, the air outlet temperature of the air curtain can be kept constant.

Suitable for use in shops, offices, hospitals and factories.

Features:

- Extensive range
- Standard white finish in RAL 9010
- Simple installation
- Easy to maintain

In addition, available on request:

- EASYAIR EC with DX changer for heating and / or cooling
- EASYAIR Hybrid: combination of water-fed and electric air curtain.

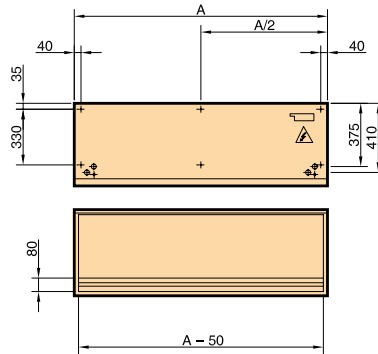
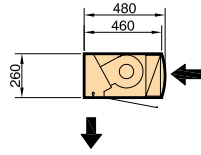
EASYAIR types M and L will be standardly delivered with a speed controlled low noise EC-fan. For type LXX this is available on request. Advantages:

- The highest efficiency in case of speed control
- Up to 50% energy saving in case of partial load
- Almost completely linearly adjustable
- Long lifetime
- Low noise level
- Integrated electronic thermal protection

Dimensions

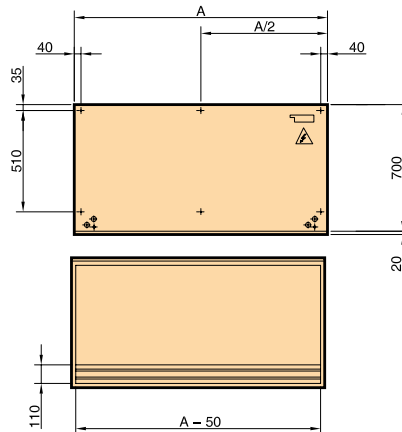
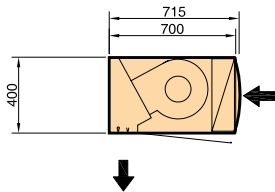
TYPE S/M/L

- Lengths A (mm)
 1.000
 1.500
 2.000
 2.500
 3.000



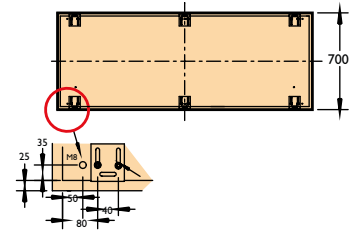
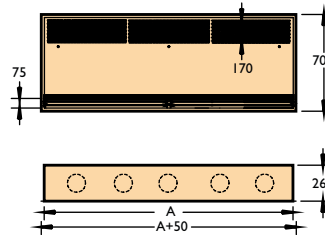
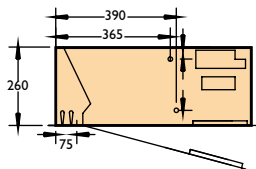
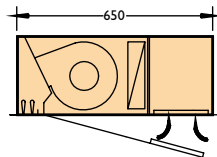
TYPE LX

- Lengths A (mm)
 1.000
 1.500
 2.000
 2.500
 3.000



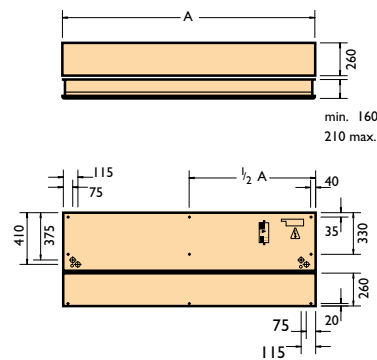
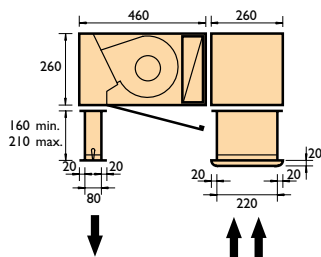
RECESSED MODEL TYPE R-S/M/L

- Lengths A (mm)
 950
 1.150
 1.450
 1.750
 1.950
 2.350
 2.450
 3.000



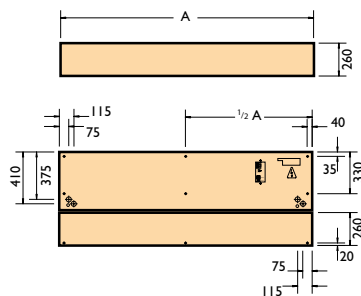
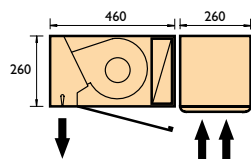
INSTALLATION KIT

Above the suspended ceiling



INSTALLATION KIT

Flush mounted with the suspended ceiling



Type	Length	Air displacement	Heating capacity of water 80/60 - T 20 °C	Water-side resistance water 80/60 - T 20 °C	Water connection	Connection of voltage of heating element	Electrical heating capacity	Connection voltage of fans	Nominal power	Current fan	Sound pressure	Weight
	mm	m ³ /h	kW	kPa	Inside wire	V (50Hz)	kW	V (50Hz)	kW	A	dB(A)*	kg
Easyair S with AC-fan - recommended mounting height (lower side of air curtain) max. 2,4 m												
S 1000 P	1000	1200	7,5	4,68	2 x 3/4"	–	–	I ~ 230	0,1	0,75	50	45
S 1500 P	1500	1800	11,3	3,24	2 x 3/4"	–	–	I ~ 230	0,15	1,1	52	60
S 2000 P	2000	2400	15,1	9,00	2 x 3/4"	–	–	I ~ 230	0,2	1,4	53	75
S 2500 P	2500	3000	18,8	4,32	2 x 3/4"	–	–	I ~ 230	0,25	1,75	54	80
S 3000 P	3000	3600	46,4	4,30	2 x 3/4"	–	–	I ~ 230	0,35	2,45	58	100
S 1000 E	1000	1200	–	–	–	3 ~ 400	3/6/9	I ~ 230	0,1	0,75	50	45
S 1500 E	1500	1800	–	–	–	3 ~ 400	4/8/12	I ~ 230	0,15	1,1	52	60
S 2000 E	2000	2400	–	–	–	3 ~ 400	6/12/18	I ~ 230	0,2	1,4	53	75
S 2500 E	2500	3000	–	–	–	3 ~ 400	6/12/18	I ~ 230	0,25	1,75	54	80
S 3000 E	3000	3600	–	–	–	3 ~ 400	6/12/18	I ~ 230	0,35	2,45	58	100
Easyair M with EC-fan - recommended mounting height (lower side of air curtain) max. 2,8 m												
M 1000 P	1000	1816	11,30	5,20	2 x 3/4"	–	–	I ~ 230	0,30	2,10	58	45
M 1500 P	1500	2724	15,70	3,60	2 x 3/4"	–	–	I ~ 230	0,50	3,10	59	60
M 2000 P	2000	3632	22,60	10,00	2 x 3/4"	–	–	I ~ 230	0,60	4,10	60	75
M 2500 P	2500	4540	27,60	4,80	2 x 3/4"	–	–	I ~ 230	0,80	5,13	61	80
M 3000 P	3000	6356	61,54	15,76	2 x 3/4"	–	–	I ~ 230	0,90	6,60	62	100
M 1000 E	1000	1816	–	–	–	3 ~ 400	3/6/9	I ~ 230	0,30	2,10	58	45
M 1500 E	1500	2724	–	–	–	3 ~ 400	4/8/12	I ~ 230	0,50	3,10	59	60
M 2000 E	2000	3632	–	–	–	3 ~ 400	6/12/18	I ~ 230	0,60	4,10	60	75
M 2500 E	2500	4540	–	–	–	3 ~ 400	6/12/18	I ~ 230	0,80	5,13	61	80
M 3000 E	3000	6356	–	–	–	3 ~ 400	10/20/30	I ~ 230	0,90	6,60	62	100
Easyair L with EC-fan - recommended mounting height (lower side of air curtain) max. 3,2 m												
L 1000 P	1000	2724	15,50	2,27	2 x 3/4"	–	–	I ~ 230	0,50	3,10	60	50
L 1500 P	1500	3632	22,60	7,30	2 x 3/4"	–	–	I ~ 230	0,60	4,10	61	65
L 2000 P	2000	5448	33,50	5,50	2 x 3/4"	–	–	I ~ 230	0,90	6,15	62	80
L 2500 P	2500	6356	39,60	7,50	2 x 3/4"	–	–	I ~ 230	1,10	7,20	63	105
L 3000 P	3000	7264	67,13	18,53	2 x 3/4"	–	–	I ~ 230	1,20	8,20	64	125
L 1000 E	1000	2724	–	–	–	3 ~ 400	5/10/15	I ~ 230	0,50	3,10	60	50
L 1500 E	1500	3632	–	–	–	3 ~ 400	7,5/15/22,5	I ~ 230	0,60	4,10	61	80
L 2000 E	2000	5448	–	–	–	3 ~ 400	10/20/30	I ~ 230	0,90	6,15	62	110
L 2500 E	2500	6356	–	–	–	3 ~ 400	10,7/21,4/32	I ~ 230	1,10	7,20	63	142
L 3000 E	3000	7264	–	–	–	3 ~ 400	10,7/21,4/32	I ~ 230	1,20	8,20	64	172
Easyair LXX with AC-fan - recommended mounting height (lower side of air curtain) max. 4,1 m												
LXX 1000 P	1000	4700	26,10	15,45	2 x 1 1/4"	–	–	I ~ 230	1,40	6,10	63	100
LXX 1500 P	1500	7100	41,00	17,54	2 x 1 1/4"	–	–	I ~ 230	2,10	9,10	64	130
LXX 2000 P	2000	9400	55,80	18,36	2 x 1 1/4"	–	–	I ~ 230	2,80	12,10	65	180
LXX 2500 P	2500	11800	70,30	18,71	2 x 1 1/4"	–	–	I ~ 230	3,50	15,20	66	210
LXX 3000 P	3000	14200	128,19	19,95	2 x 1 1/4"	–	–	I ~ 230	4,10	18,20	68	250

* Measured at 3m.

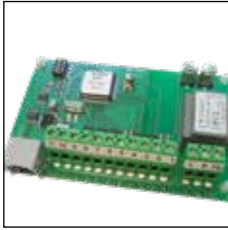
Conversion table

T ^a Water °C	T ^a Air + 15°C	T ^a Air + 18°C	T ^a Air + 20°C
100/80	1,56	1,49	1,44
90/70	1,34	1,26	1,22
80/60	1,11	1,05	1
70/50	0,89	0,82	0,78
60/40	0,67	0,61	0,56
55/35	0,56	0,5	0,45

Accessories – additional sections



Connecting cable between controller and air curtain



GLT - Module (DDC/ MODBUS)

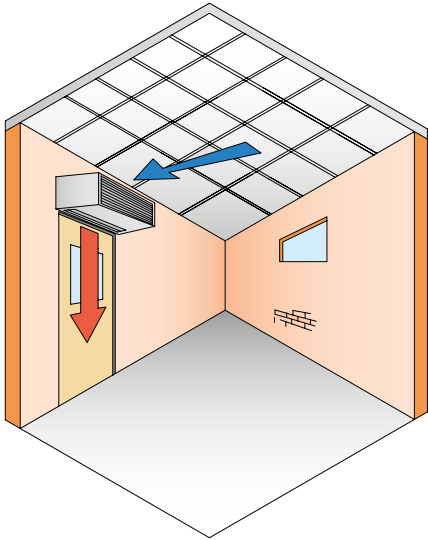


Door contact



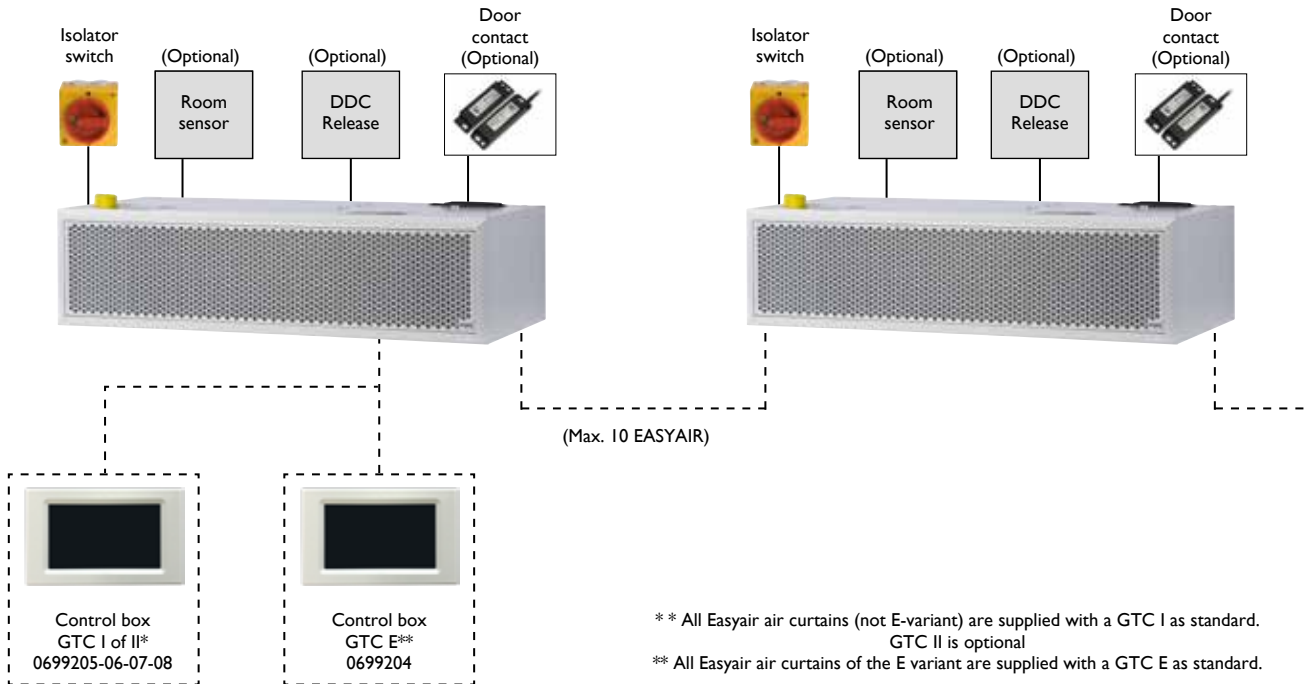
Ceiling fixing set

Assembly/location suggestions

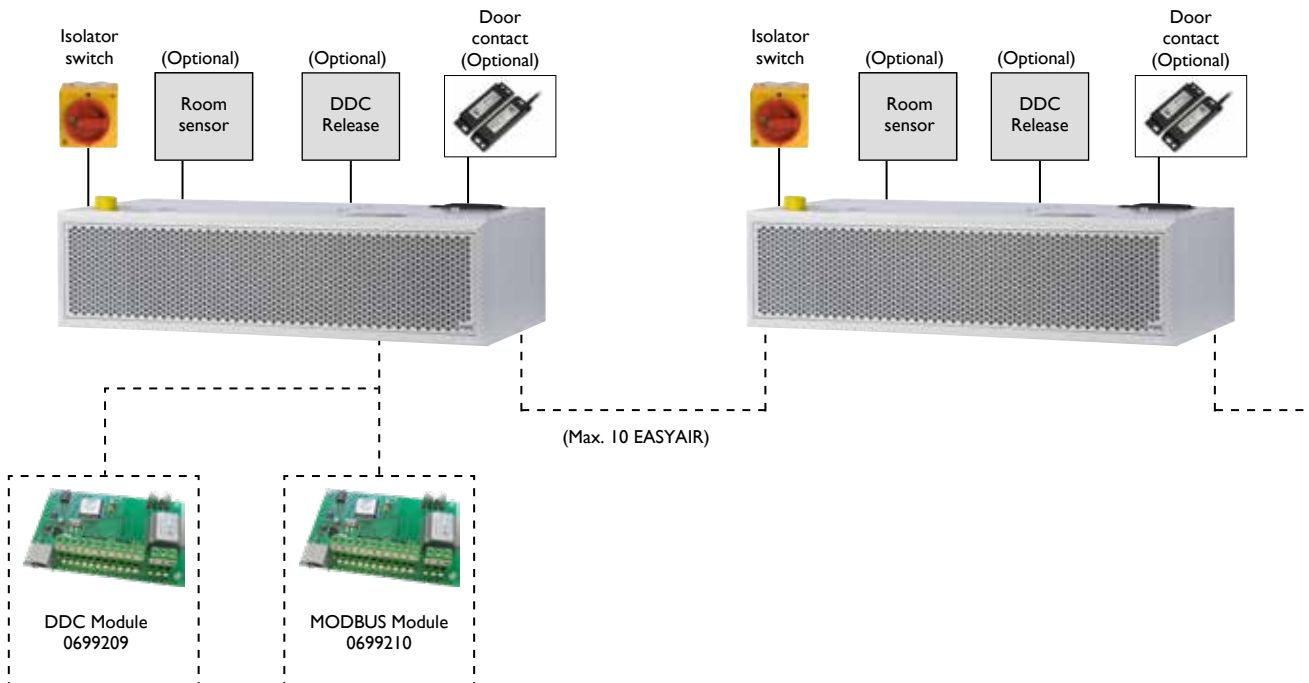


Controls

EASYAIR P (hot water air curtain) (AC / EC) or EASYAIR E (electrically heated air curtain) (AC / EC)



EASYAIR P (hot water air curtain) or EASYAIR E (electrically heated air curtain) (AC / EC)



Prices Mark EASYAIR

PRODUCT - AIR CURTAIN EASYAIR S WITH AC-FAN - MAX. MOUNTING HEIGHT 2,4 M**



Code nr.	Description	Price
5992300	Easyair S1000 P, nominal power 10,17 kW	€ 1803
5992301	Easyair S1500 P, nominal power 14,13 kW	€ 2347
5992302	Easyair S2000 P, nominal power 20,34 kW	€ 2819
5992303	Easyair S2500 P, nominal power 24,84 kW	€ 3694
5992304	Easyair S3000 P, nominal power 26,02 kW	€ 4952
5992305	Easyair S1000 E, nominal power 3 / 6 / 9 kW	€ 2820
5992306	Easyair S1500 E, nominal power 4 / 8 / 12 kW	€ 3364
5992307	Easyair S2000 E, nominal power 6 / 12 / 18 kW	€ 3758
5992308	Easyair S2500 E, nominal power 6 / 12 / 18 kW	€ 4878
5992309	Easyair S3000 E, nominal power 6 / 12 / 18 kW	€ 5153

PRODUCT - AIR CURTAIN EASYAIR M WITH EC-FAN - MAX. MOUNTING HEIGHT 2,8 M**



Code nr.	Description	Price
5992310	Easyair M1000 P, nominal power 11,3 kW	€ 2005
5992311	Easyair M1500 P, nominal power 15,7 kW	€ 2694
5992312	Easyair M2000 P, nominal power 22,6 kW	€ 3210
5992313	Easyair M2500 P, nominal power 27,6 kW	€ 4028
5992314	Easyair M3000 P, nominal power 29,7 kW	€ 5080
5992315	Easyair M1000 E, nominal power 3 / 6 / 9 kW	€ 2985
5992316	Easyair M1500 E, nominal power 4 / 8 / 12 kW	€ 3685
5992317	Easyair M2000 E, nominal power 6 / 12 / 18 kW	€ 4253
5992318	Easyair M2500 E, nominal power 6 / 12 / 18 kW	€ 5169
5992319	Easyair M3000 E, nominal power 10 / 20 / 30 kW	€ 5459

PRODUCT - AIR CURTAIN EASYAIR L WITH EC-FAN - MAX. MOUNTING HEIGHT 3,2 M**



Code nr.	Description	Price
5992320	Easyair L1000 P, nominal power 15,5 kW	€ 2326
5992321	Easyair L1500 P, nominal power 22,6 kW	€ 2838
5992322	Easyair L2000 P, nominal power 33,5 kW	€ 3787
5992323	Easyair L2500 P, nominal power 39,6 kW	€ 4406
5992324	Easyair L3000 P, nominal power 34,0 kW	€ 5415
5992325	Easyair L1000 E, nominal power 5 / 10 / 15 kW	€ 3175
5992326	Easyair L1500 E, nominal power 7,5 / 15 / 22,5 kW	€ 3844
5992327	Easyair L2000 E, nominal power 10 / 20 / 30 kW	€ 4756
5992328	Easyair L2500 E, nominal power 10,7 / 21,4 / 32 kW	€ 5619
5992329	Easyair L3000 E, nominal power 10,7 / 21,4 / 32 kW	€ 6347

PRODUCT - AIR CURTAIN EASYAIR LXX WITH AC-FAN - MAX. MOUNTING HEIGHT 4,1 M**



Code nr.	Description	Price
5992340	Easyair LXX1000 P, nominal power 26,1 kW	€ 4816
5992341	Easyair LXX1500 P, nominal power 41,0 kW	€ 5905
5992342	Easyair LXX2000 P, nominal power 55,8 kW	€ 7256
5992343	Easyair LXX2500 P, nominal power 70,3 kW	€ 8778
5992344	Easyair LXX3000 P, nominal power 67,0 kW	€ 9657

The Easyair LXX is optionally available with EC-fan against additional costs.

PRODUCT - RECESSED AIR CURTAIN EASYAIR R-S WITH AC-FAN - MAX. MOUNTING HEIGHT 2,4 M**

Code nr.	Description	Price
5992400	Easyair R-S1000 P, nominal power 7,5 kW	€ 2667
5992401	Easyair R-S1500 P, nominal power 11,3 kW	€ 3217
5992402	Easyair R-S2000 P, nominal power 15,1 kW	€ 3724
5992403	Easyair R-S2500 P, nominal power 18,8 kW	€ 4736

PRODUCT - RECESSED AIR CURTAIN EASYAIR R-M WITH EC-FAN - MAX. MOUNTING HEIGHT 2,8 M**

Code nr.	Description	Price
5992410	Easyair R-M1000 P, nominal power 11,3 kW	€ 2832
5992411	Easyair R-M1500 P, nominal power 15,7 kW	€ 3263
5992412	Easyair R-M2000 P, nominal power 22,6 kW	€ 3784
5992413	Easyair R-M2500 P, nominal power 27,6 kW	€ 4810

PRODUCT - RECESSED AIR CURTAIN EASYAIR R-L WITH EC-FAN - MAX. MOUNTING HEIGHT 3,2 M**

Code nr.	Description	Price
5992420	Easyair R-L1000 P, nominal power 15,5 kW	€ 3019
5992421	Easyair R-L1500 P, nominal power 22,6 kW	€ 3468
5992422	Easyair R-L2000 P, nominal power 33,5 kW	€ 4203
5992423	Easyair R-L2500 P, nominal power 34,0 kW	€ 5159

ACCESSORIES - INSTALLATION KITS FOR SUSPENDED CEILING

Code nr.	Description	Price
5992250	Easyair S/M/L installation kit for above suspended ceiling, L=1,0m	€ 682
5992251	Easyair S/M/L installation kit for above suspended ceiling, L=1,5m	€ 828
5992252	Easyair S/M/L installation kit for above suspended ceiling, L=2,0m	€ 987
5992253	Easyair S/M/L installation kit for above suspended ceiling, L=2,5m	€ 1100
5992255	Easyair S/M/L installation kit for flush mounting with suspended ceiling, L=1,0m	€ 243
5992256	Easyair S/M/L installation kit for flush mounting with suspended ceiling, L=1,5m	€ 297
5992257	Easyair S/M/L installation kit for flush mounting with suspended ceiling, L=2,0m	€ 347
5992258	Easyair S/M/L installation kit for flush mounting with suspended ceiling, L=2,5m	€ 392
5992260	Easyair LXX installation kit for above suspended ceiling, L=1,0m	€ 1319
5992261	Easyair LXX installation kit for above suspended ceiling, L=1,5m	€ 1514
5992262	Easyair LXX installation kit for above suspended ceiling, L=2,0m	€ 1739
5992263	Easyair LXX installation kit for above suspended ceiling, L=2,5m	€ 1894
5992265	Easyair LXX installation kit for flush mounting with suspended ceiling, L=1,0m	€ 463
5992266	Easyair LXX installation kit for flush mounting with suspended ceiling, L=1,5m	€ 652
5992267	Easyair LXX installation kit for flush mounting with suspended ceiling, L=2,0m	€ 851
5992268	Easyair LXX installation kit for flush mounting with suspended ceiling, L=2,5m	€ 925

ACCESSORIES - CONTROL

Code nr.	Description	Price
0699103	Room thermostat	€ 59
0699104	Frost thermostat separate delivery	€ 68
0699105	Frost thermostat assembled	€ 354
0699102	Door contact only in combination with 0699204 to 208	€ 108
0699204	Thermostat GTC E	€ 404
0699205	Thermostat GTC I	€ 404
0699206	Control panel GTC 2 (with weekly timer)	€ 530
0699207	Control panel GTC 2 incl. fan, transformer etc, loose	€ 1030
0699208	Control panel GTC 2 incl. vent, trafo etc, built-in	€ 1140
0699209	DDC Modul for GBS control	€ 191
0699210	MOD BUS module	€ 318
0699211	Internal room sensor	€ 60
0699106	Isolation switch 3-poles for type P	€ 125
0699107	Isolation switch 6-poles for type E (9-15 kW)	€ 243
0699116	Isolation switch 6-poles for type E (18-22 kW)	€ 258
0699117	Isolation switch 6-poles for type E (30-32 kW)	€ 415
0699109	Data cable 20 m	€ 72
0699110	Data cable 50 m	€ 211
0699111	Data cable connector	€ 12

For function explanations see chapter on control

ACCESSORIES - WATER-SIDE CONTROL

Code nr.	Description	Price
0699131	3-way valve DN 20 3/4"	€ 368
0699132	3-way valve DN 25 1"	€ 428
0699133	3-way valve DN 32 1 1/4"	€ 555
0699141	Magnet valve DN 20 3/4"	€ 435
0699142	Magnet valve DN 25 1"	€ 578
0699143	Magnet valve DN 32 1 1/4"	€ 765

ACCESSORIES - ASSEMBLY

Code nr.	Description	Price
0699100	Mounting set M8-4 for type 1000/1500/200	€ 50
0699101	Mounting set M8-6 for type 2500/3000	€ 59
0699112	Ground frame for vertical positioning	€ *
0699113	Deflating for vertical positioning	€ *
0699108	Air curtain painted in RAL color by choice	€ *

REMARK

* On demand

** All Easyair air curtains are standardly delivered with a GTM II(E) speed controller